



# D-Bot Series

## Technical Parameters

DC06



DC08



DC10



DC16



DC20



DC30



### Specifications

<b>Payload</b>	6 kg (13.3 lbs)	8 kg (17.7 lbs)	10 kg (22.1 lbs)	16 kg (35.3 lbs)	20 kg (44.1 lbs)	30 kg (66.2 lbs)
<b>Reach</b>	800 mm (31.5 in)	1300 mm (51.2 in)	1200 mm (47.3 in)	1600 mm (63 in)	1800 mm (70.1 in)	1300 mm (51.2 in)
<b>Degrees of Freedom</b>	6 rotary joints					

### Environment & Safety

<b>Ambient Temperature</b>	Ambient temperature: 0° to 50°C (32° to 122°F)			Ambient temperature: 0° to 50°C (32° to 122°F)		
<b>IP Classification</b>	IP 66 water and dust protection			IP 66 water and dust protection		
<b>Safety Rating</b>	PLd Cat3. / SIL 3 (Safe position, speed, torque limits, I/Os)			PLd Cat3. / SIL 3 (Safe position, speed, torque limits, I/Os)		
<b>Safety Functions</b>	25 configurable safety functions			25 configurable safety functions		

### Performance

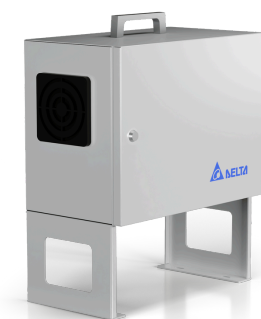
<b>Max. TCP Speed</b>	2 m/s		4 m/s		3 m/s		4 m/s		4 m/s		4 m/s	
<b>Pose Repeatability</b>	±0.02 mm											
<b>Axis Movement</b>	<b>Working range</b>	<b>Maximum speed</b>	<b>Working range</b>	<b>Maximum speed</b>	<b>Working range</b>	<b>Maximum speed</b>	<b>Working range</b>	<b>Maximum speed</b>	<b>Working range</b>	<b>Maximum speed</b>	<b>Working range</b>	<b>Maximum speed</b>
Axis 1	±360°	180°/s	±360°	180°/s	±360°	180°/s	±360°	180°/s	±360°	120°/s	±360°	120°/s
Axis 2	±360°	180°/s	±360°	180°/s	±360°	180°/s	±360°	180°/s	±360°	120°/s	±360°	120°/s
Axis 3	±120°	200°/s	±120°	200°/s	±120°	200°/s	±120°	200°/s	±120°	150°/s	±120°	150°/s
Axis 4	±150°	200°/s	±150°	200°/s	±150°	200°/s	±150°	200°/s	±150°	150°/s	±150°	150°/s
Axis 5	±360°	200°/s	±360°	200°/s	±360°	200°/s	±360°	200°/s	±360°	180°/s	±360°	180°/s
Axis 6	±360°	200°/s	±360°	200°/s	±360°	200°/s	±360°	200°/s	±360°	180°/s	±360°	180°/s

### Interfaces & Programming

<b>Interfaces at the Flange</b>	I/Os Ports, MODBUS, RTU, 24V PSU						I/Os Ports, MODBUS, RTU, 24V PSU					
<b>I/O Ports</b>												
Digital in	3		3		3		3		3		3	
Digital out	3		3		3		3		3		3	
Analog	2		2		2		2		2		2	
<b>Programming Interface</b>	Drag & Drop, Python, ROS 1, C++ (low level)						Drag & Drop, Python, ROS 1, C++ (low level)					

### Physical

<b>Weight</b>	26 kg (57.4 lbs)	48 kg (105.9 lbs)	45 kg (99.3 lbs)	60 kg (132.3 lbs)	88 kg (194.1 lbs)	95 kg (209.5 lbs)
<b>Mounting</b>	Omnidirectional, including table mounting, wall mounting, and ceiling mounting			Omnidirectional, including table mounting, wall mounting, and ceiling mounting		
<b>Material</b>	Aluminum, plastic, steel			Aluminum, plastic, steel		



#### Control Box

<b>Dimensions</b>	563 mm x 470 mm x 243 mm
<b>Weight</b>	20 kg (44.1 lbs)
<b>Power Supply</b>	100-240 VAC, 50/60 Hz, max. 1.5 kW
<b>Interface</b>	8x GPIO, Modbus, TCP, Ethernet IP, USB 3.0, Safe I/Os



#### Teach pendant

<b>Dimensions</b>	285 mm x 228 mm x 95 mm (11.4 in)
<b>Resolution</b>	2560 x 1600
<b>Cable length</b>	5 m (3.3 ft)