

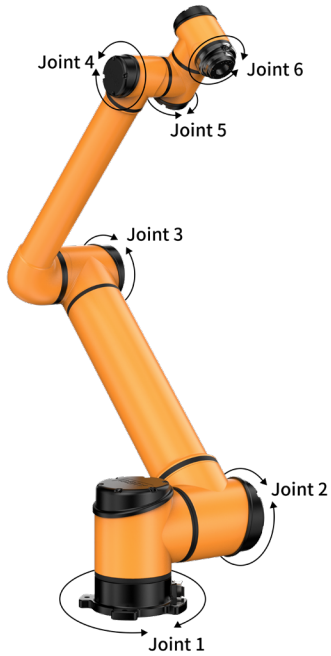
6 Axis  
20kg Payload  
1650mm Reach



Learn More



[www.aubo-usa.com](http://www.aubo-usa.com)



## SPECIFICATIONS

Payload	20 kg
Reach	1650 mm
Weight	63 kg
Mounting Base Footprint	Ø260 mm
Avg. Power Consumption	1000 W
Peak Power Consumption	3000 W
Operating Temperature	0-50 °C
Humidity	90% Relative Humidity (No Condensation)

## CONTROL BOX SPECIFICATIONS

Size (L x W x H)	390mm x 370mm x 265mm
Weight	15 kg
Robot Cable Length (Customizable)	5 m
Teach Pendant Cable Length	4 m
Power Supply Cable Length	5 m
Communication Protocols	Ethernet TCP/IP, ModBus-RTU/TCP, Profinet
<b>I/O Ports</b>	
Digital Input	16 (User) / 16 (Safety)
Digital Output	16 (User) / 16 (Safety)
Analog Input	4
Analog Output	4
I/O Power Supply	24V 3A
Power Supply Requirements	100-240VAC, 50-60Hz
Open Source Development Support	SDKs in C/C++/C#/Lua/Python, ROS, Plug-in Support

The AUBO i20 medleys the best of safety and precision from collaborative robots with all of the toughness you'd expect from an industrial robot. The i20's power force limiting technology coupled with a smaller footprint makes it the perfect high-tier performance automation solution while retaining collaborative capabilities. The AUBO i20 is designed for a wide range of heavy-duty applications but excels in applications that demand extra performance like palletizing, packaging, and load-carrying.

## MOVEMENT

Repeatability (ISO 9283)	±0.1 mm
Tool Velocity	≤2.6 m/s

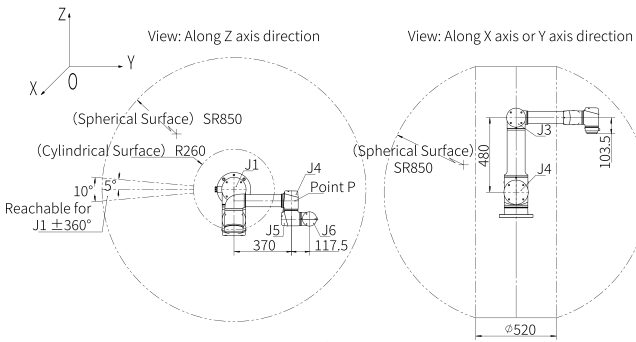
Axis Movement	Working Range	Maximum Speed
J1 Base	±360°	93 °/s
J2 Shoulder	±360°	93 °/s
J3 Elbow	±360°	178 °/s
J4 Wrist	±360°	178 °/s
J5 Wrist	±360°	178 °/s
J6 Wrist	±360°	178 °/s

## FEATURES

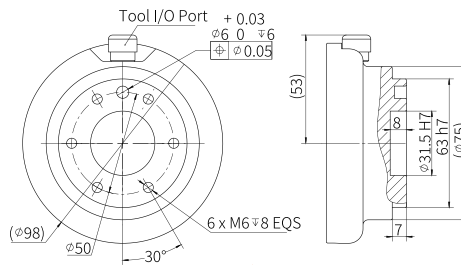
Mounting Orientation	Any Orientation
IP Classification	IP 54
ISO 1644-1 Clean Room Level	Class 5

Tool I/O Ports	
Digital Input	4 (Customizable)
Digital Output	4 (Customizable)
Analog Input	2
Analog Output	-

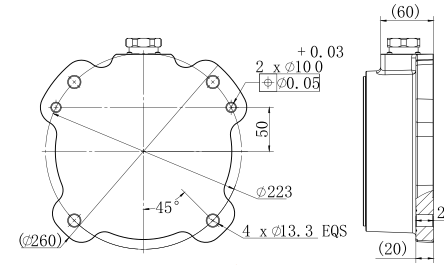
I/O Power Supply	
Output Voltage	0V/12V/24V
Output Current	0.8A



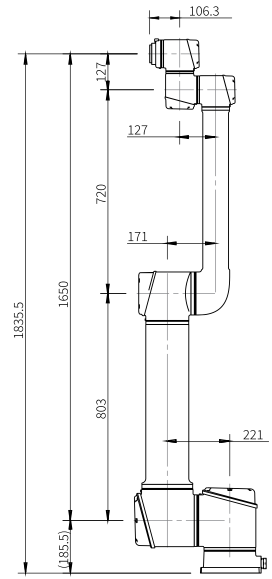
WORKSPACE DIMENSIONS



END FLANGE DIMENSIONS



ROBOT BASE TOP VIEW



PRODUCT DIMENSIONS