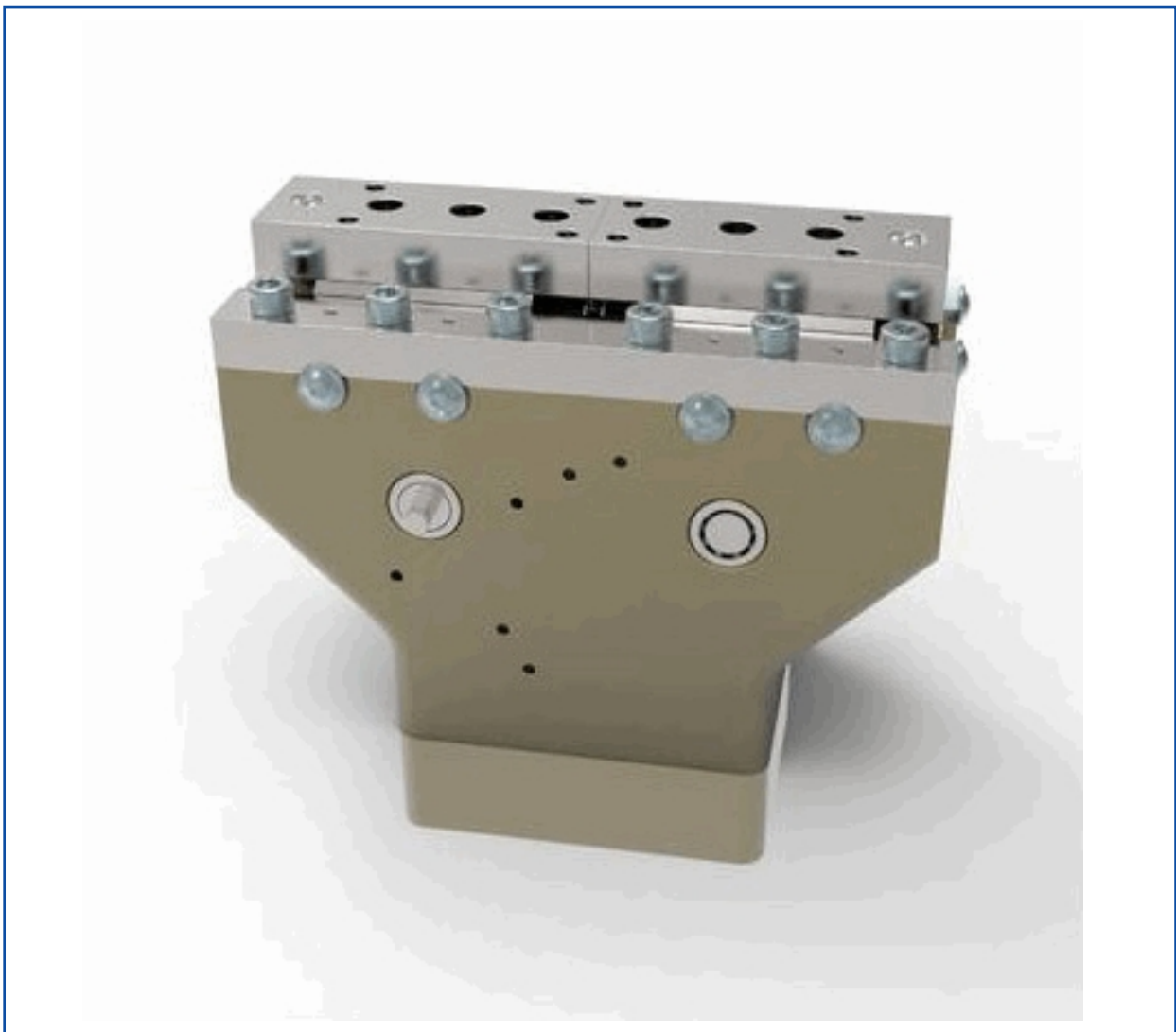
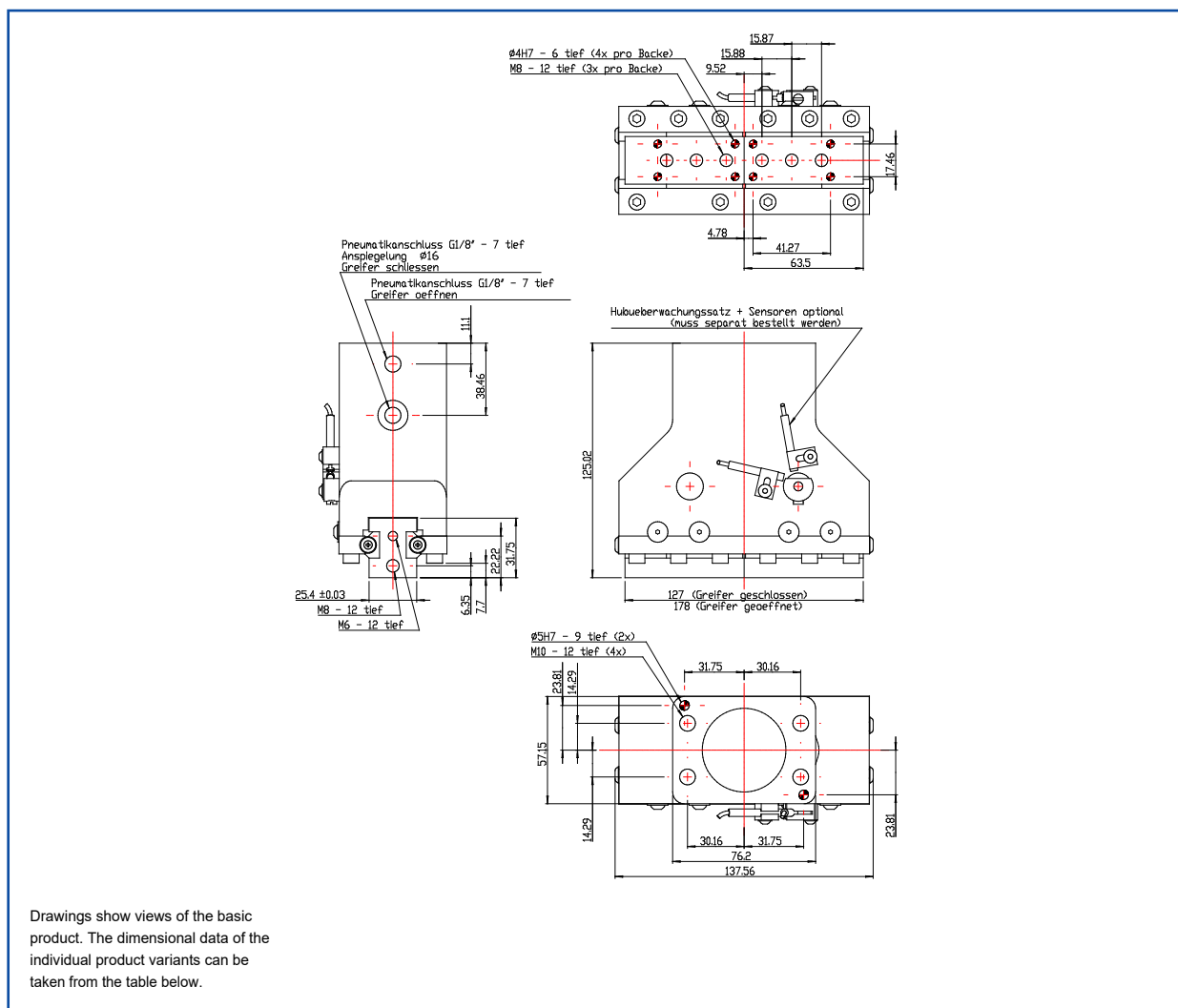


DATASHEET



| | |
|--|----------|
| Part-No. | 15000306 |
| Type | RP |
| Model | 40 |
| Stroke currently set in the CAD model [mm] | 0 |
| Total stroke [mm] | 50.8 |
| Sensor Mounting Kit | Nein |
| Gripping Force at p = 6 bar [N] | 850 |
| Recommended Part Weight [kg] | 8 |
| Weight [kg] | 2.775 |
| Cylinder Bore [mm] | 44.4 |
| Displacement [cm³] | 28 |
| Air Consumption each Cycle open/close [l] | 0.392 |
| Actuation time opening at p = 6 bar [s] | 0.39 |
| Actuation time closing at p = 6 bar [s] | 0.39 |
| Repeatability [mm] | +/- 0.03 |
| Maximum Finger Length [mm] | 160 |
| Customs Tariff Number | 84799070 |



 3D View

